

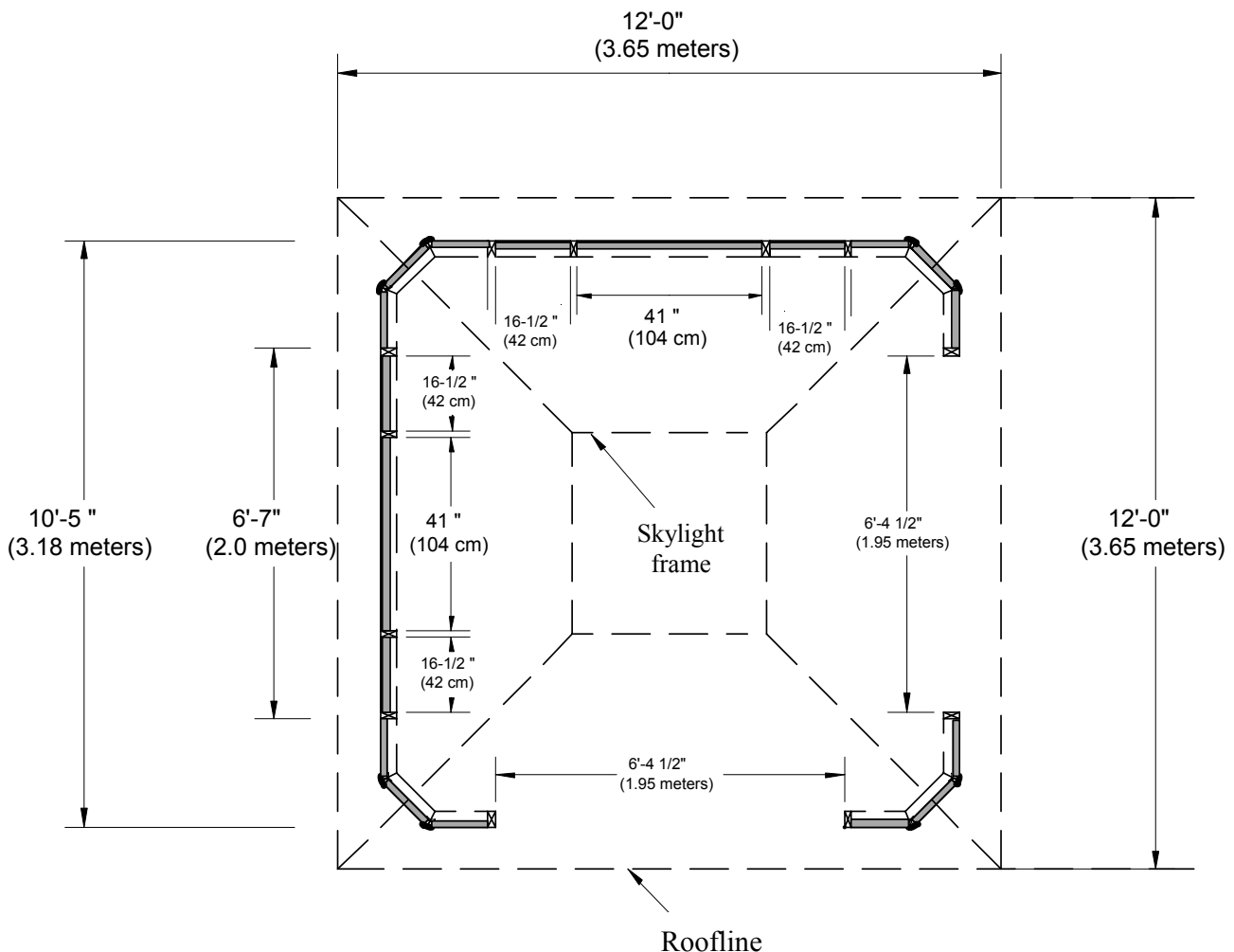
## 2008 Pavilion Building Installation Instructions and Dimensions

Please ensure the building is located to allow for adequate clearance. The base should be sufficient to take the weight of the building and the accompanying spa (see separate sheet for spa installation instructions) The base should also be of adequate strength to anchor the building against wind uplift. We recommend that your base should be a minimum of 5" (12.7cm) reinforced concrete

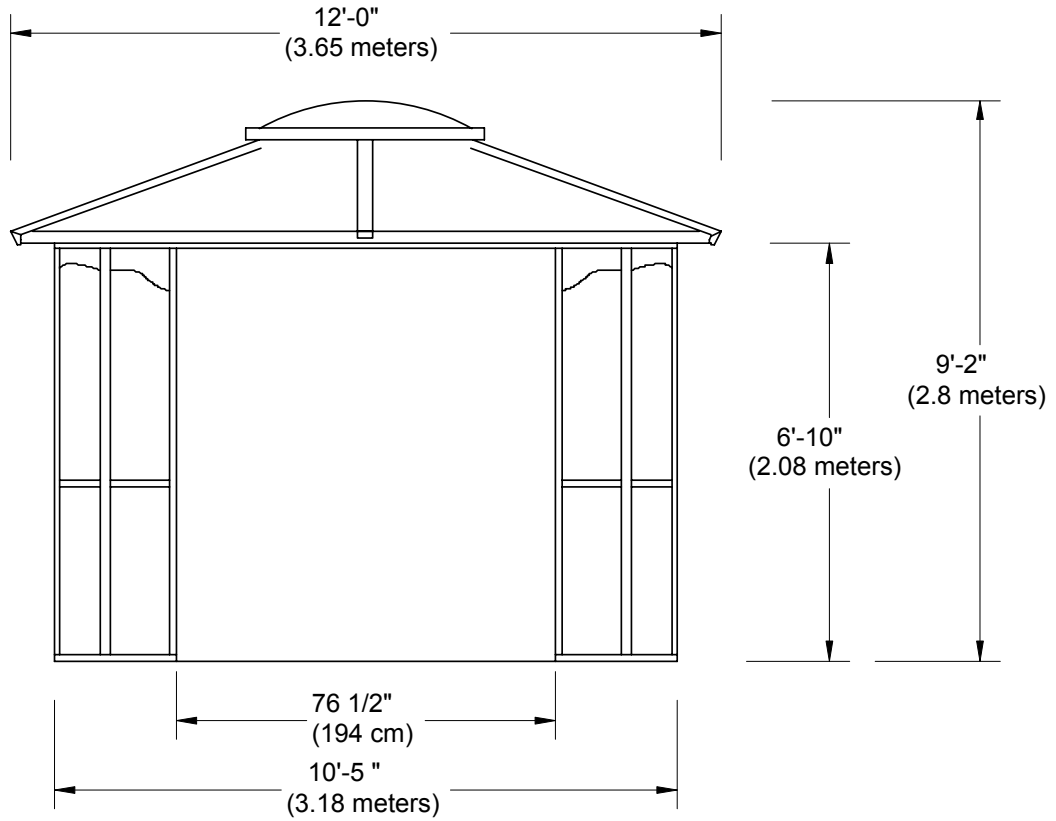
Please ensure that the base is 1" (2.5cm) bigger than the dimensions of the building footprint, but please also allow for the roof overhang. Please refer to the following diagrams for measurements.

### Top View of Pavilion

See over page for side view and base view.



Side View of Pavilion



Base View of Pavilion

