

*Thank you very much for your order.*

On purchasing your spa you gave us an estimated month of delivery, within the next few days our installation department will contact you in writing with information regarding your delivery date. If you have not received a letter within 14 days please call our installation department on 01245 265036 and choose option 2.

To enable us to complete your delivery as smoothly as possible, please ensure the following arrangements are made:

#### Electrical Supply

Your electrician will need to provide a 13amp MK Masterseal waterproof socket near the spa and a Type C RCD to protect the consumer unit. This system will allow your spa to be automatically switched back on after power cuts. Alternatively you could use a Masterseal RCD socket, which is both waterproof and a RCD protector, but will not automatically reset after power cuts.

To comply with BS7671 legislation as of the 1<sup>st</sup> January 2005 a competent electrician registered with one of the following must carry out all electrical work: BRE Certification Ltd (ECA & IEE); British Standards Institution; ELECSA Ltd; NICEIC Certification Services Ltd or Zurich Certification Limited. Your electrician should give you a certificate once the work has been completed and this should be available for our technicians to see.

#### Siting your Spa

The Solana Spa is specially designed to live in a conservatory or in a ground floor health suite or outside if you wish. When choosing a place to site the spa please bear in mind it needs to be flat and level as the Solana TX spa cannot be shimmed in any way. Please be aware that when siting a spa indoors there are certain electrical regulations which must be followed, please seek advice from a qualified electrician. You also need to consider the implications of condensation. The instructions for bases may change if you are having a free standing building installed. Please consult building installation instructions if this is the case.

#### Engine Compartment

In the event that a technician needs to work on your spa or for you to be able to drain it or to change the light bulb there must be at least 24" clear working space on the control side of the spa.

#### Access/Delivery:

Access should be clear for our technicians to push your spa on a wheeled dolly (trolley) from the delivery vehicle to the site for the spa, please measure any alleyways or tight spots bearing in mind obstructions such as steps, low roof overhangs, drainpipes, window seals, tight turns or anything that could obstruct the delivery route. Your spa, when in the trolley, will need a minimum access width of 30" and a minimum access height of 73". Spas are very heavy and even an 8" step requires thought.

### Sinking Of Spas:

If you intend to sink your spa at all please ensure adequate drainage and access, please refer to sinking instructions or call our installation department, inattention to this could invalidate your warranty.

### Spa Building or Gazebo

If you are having a lip mounted or free standing building with your spa please refer to the separate installation instructions as the addition of a building may change the required size of your base and could influence where you site your spa. If you have not been given these instructions please call our installation department or your sales person and they will send a copy to you.

### **Payment of Balance**

**Payment of balance is due prior to or on the day of delivery, payment can be made by :**

- **bankers draft or building society cheque - made payable to 'Hot Tub Barn Limited'**
- **bank transfer (4 days before delivery) – please call 01245 265036 and choose option 4 for details**

**Unfortunately we are no longer able to accept personal or company cheques unless full payment is made prior to delivery and is fully cleared (to ensure cleared funds please post your cheque to Head Office 10 days before delivery).**

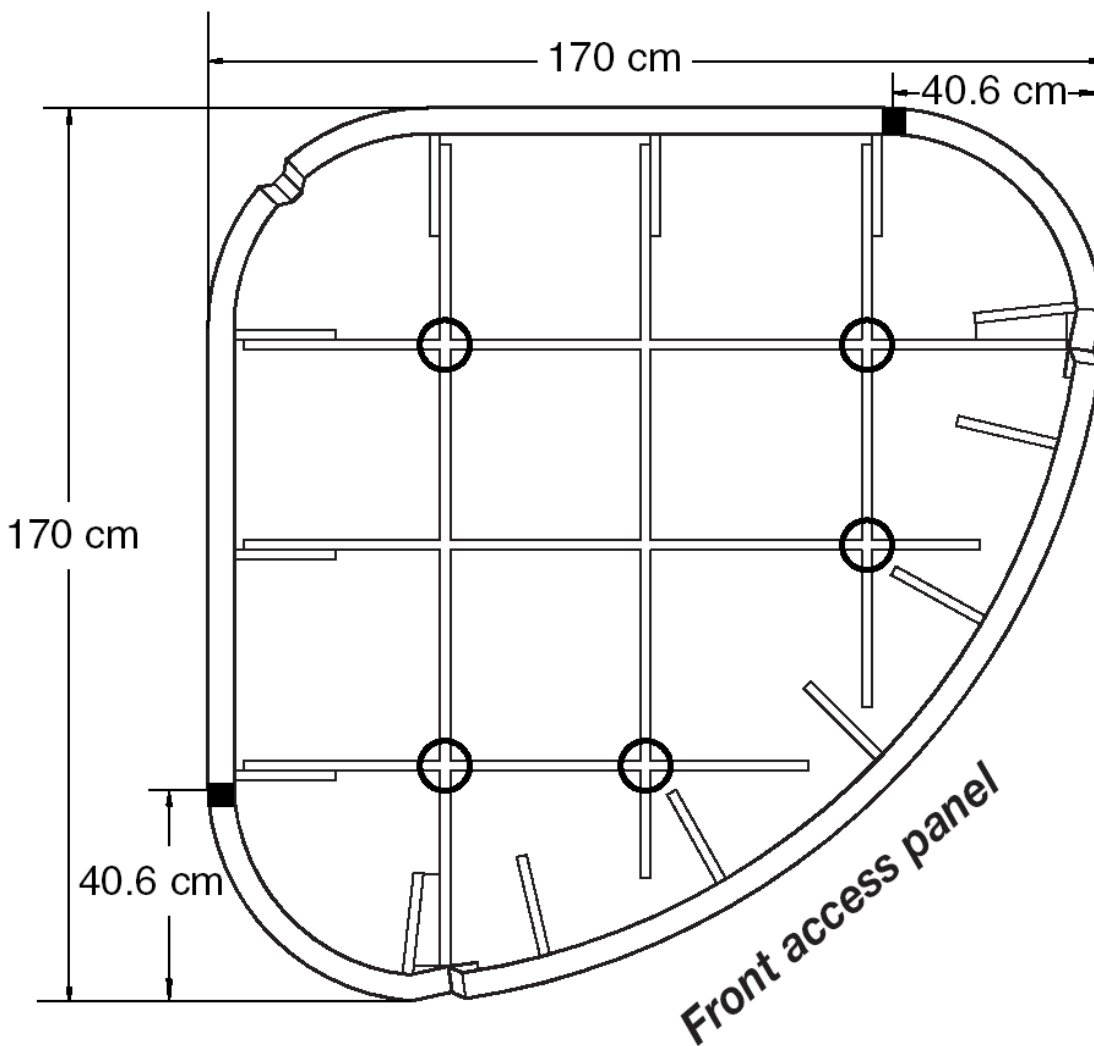
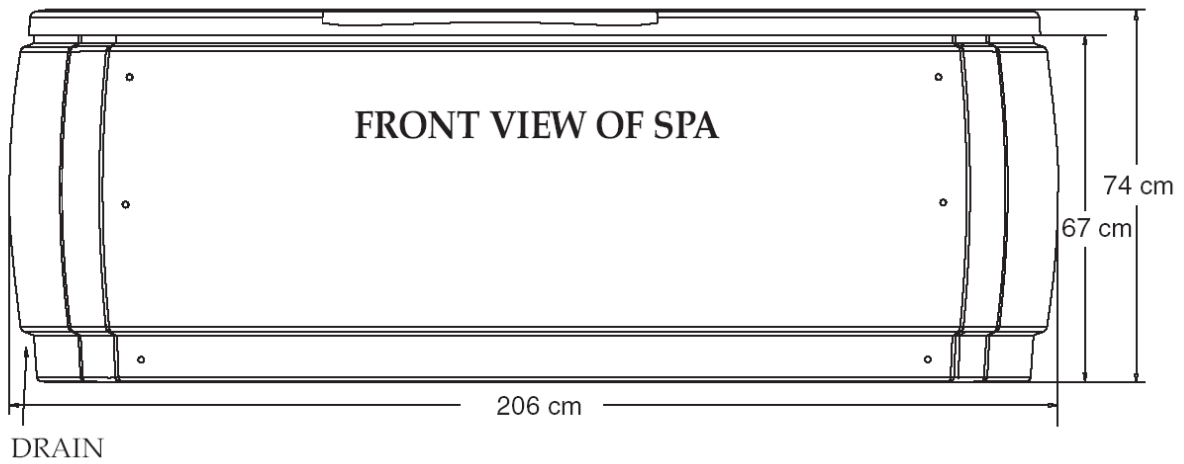
**We only accept credit card payments of the balance by prior agreement and there is a 2.5% commission charged for this service.**

***If payment is not been made on or before the day of delivery we reserve the right to remove the goods until payment is received. All goods remain the property of Hot Tub Barn Limited until full payment is received.***

If you have any queries or require further information regarding the delivery of your spa please contact your Sales Person or our Installation Department.

We look forward to having you in "Hot Water" very soon.

**Please Note:** All dimensions are approximate; measure your spa before making critical design or pathway decisions.



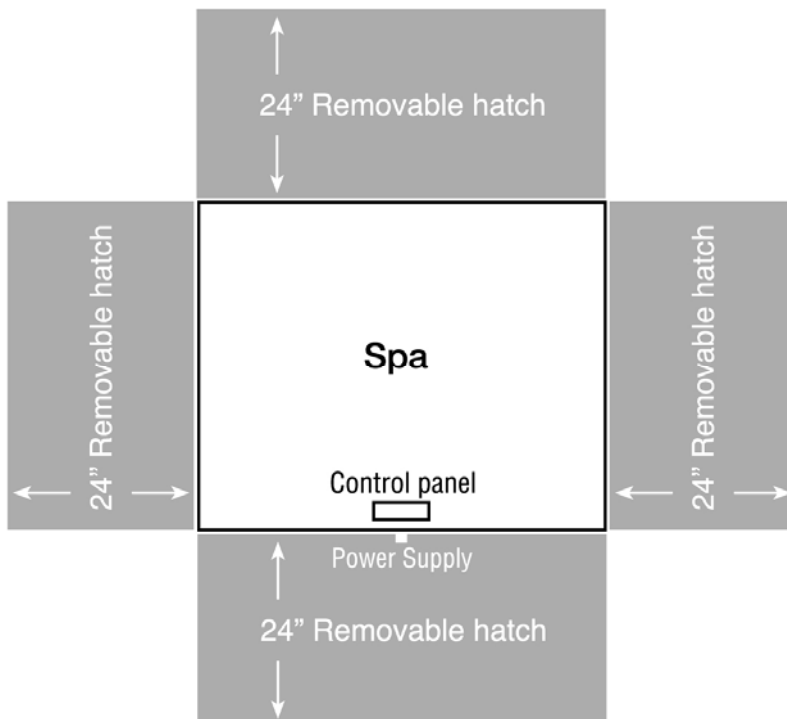
## Instructions and Advice for Sinking Spas

If you intend to sink your spa please read the following carefully.

Because of the need to access the spa should a fault occur we need you to design your deck with removable hatches.

When digging your pit please allow a 24" (61cm) gap on all four sides of your hot tub and ensure retaining walls are sufficient to allow clean access and no backfilling should occur as this could invalidate warranties.

Dig the hole and lay a 5" (13cm) reinforced concrete base with a soak away underneath. Please position your soak away so it can be accessed to ensure it cannot become blocked with debris. Please make sure the soak away is sufficient to ensure your pit cannot become full of water because your warranty will not cover flooded electrical components.



If you are to sink a HotSpring Spa fitted with SpaAudio you must leave the spa semi-sunk so as to expose the outside controls.

If you are in a low-lying or possible flood area the fitting of a submersible sump pump is recommended.

If using decking around the spa, all four sides, may require access, must have removable panels to allow access to the sides of the spa.

Please ensure the electrical requirements meet those shown in the Installation Instructions you were given at the time of purchase. All electrical fittings must be accessible at the control panel end of the pit and are fitted to current legislation.

Always consult a builder or contractor for professional advice.

If you have any questions or queries regarding sinking your spa please contact your sales person or our installation department, see below.